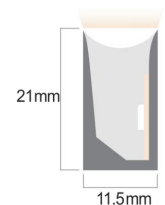
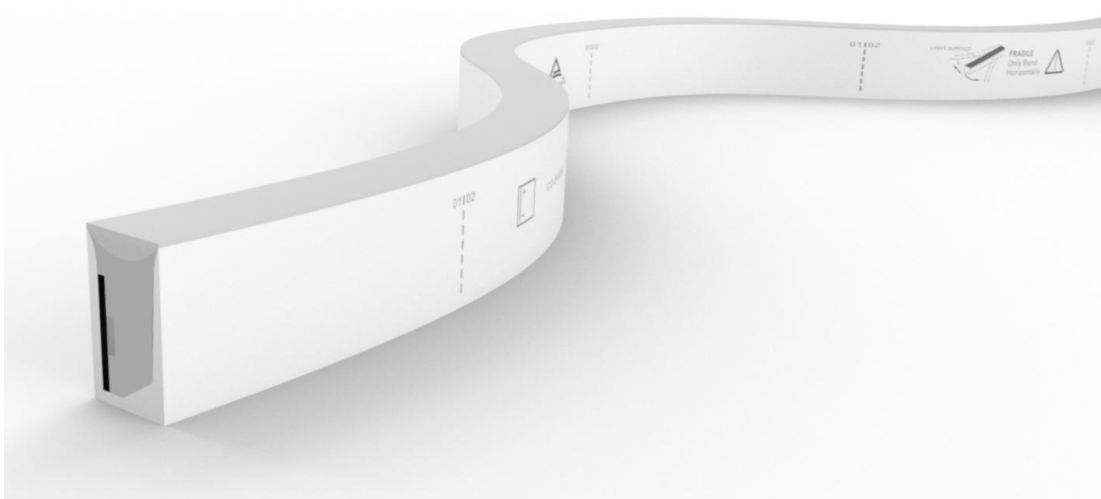


Accessories for

SFS11 Silicone

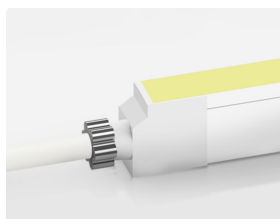
Contents

| | |
|--------------------------------------|-----------|
| 1. Connectors | 02 |
| 1.1 Injection-moulded Connector | |
| 1.2 DIY Connector | |
| 1.3 On Cable Waterproof connector | |
| 2. Mounting Profile | 05 |
| 2.1 Standard Aluminum Profile | |
| 2.2 Self Locking Aluminum Profile | |
| 2.3 Bounce Locking Aluminum Profile | |
| 2.4 Bendable Stainless Steel Profile | |
| 3. Packaging | 06 |



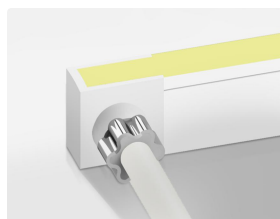
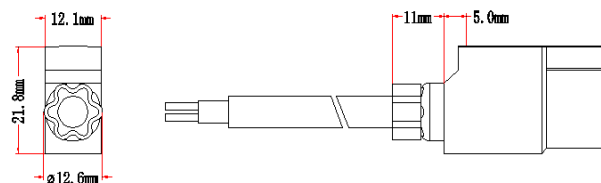
1. Connectors

1.1 IP67 Injection-moulded Connector



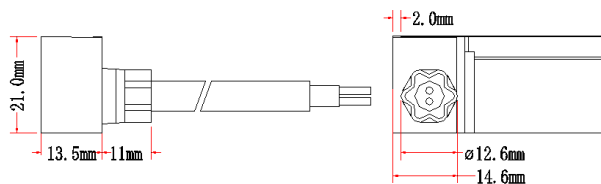
Injection-moulded Front Connector (Direct)
SFS11-IM-D

Factory Pre-installed
Cable Output: direct
Standard Cable Length: 0.5m/1m/2m/3m



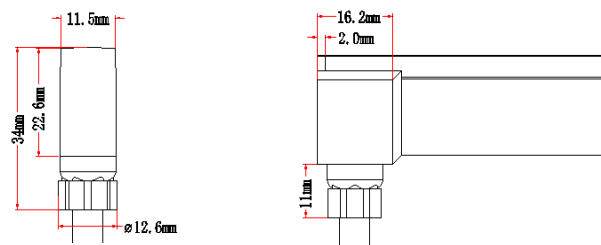
Injection-moulded Front Connector (Side)
SFS11-IM-S

Factory Pre-installed
Cable Output: side
Standard Cable Length: 0.5m/1m/2m/3m



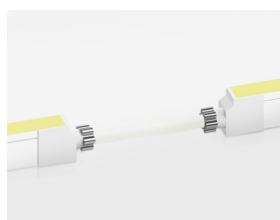
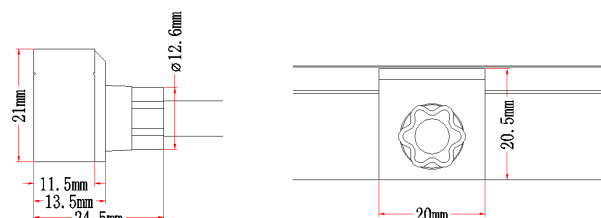
Injection-moulded Front Connector (Bottom)
SFS11-IM-B

Factory Pre-installed
Cable Output: bottom
Standard Cable Length: 0.5m/1m/2m/3m



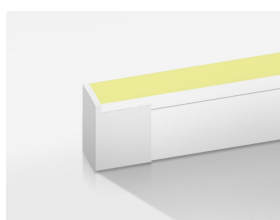
Injection-moulded Middle Connector
SFS11-IM-MC

Factory Pre-installed
Cable Output: side
Standard Cable Length: 0.5m/1m/2m/3m



Injection-moulded Middle Jumper
SFS11-IM-MJ

Factory Pre-installed
Cable Output: direct
Standard Cable Length: 0.2m~2m



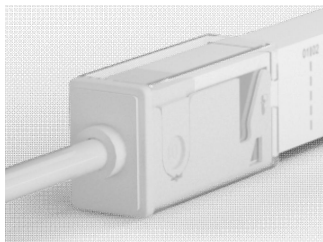
Injection-moulded End Cap
SFS11-IM-EC

Factory Pre-installed



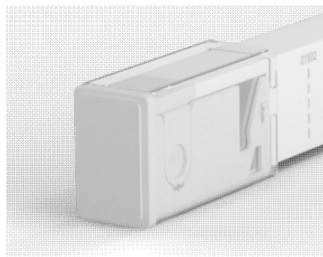
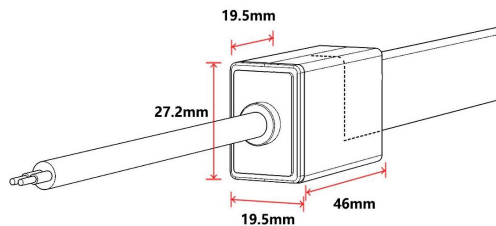
1. Connectors

1.2 DIY Connector



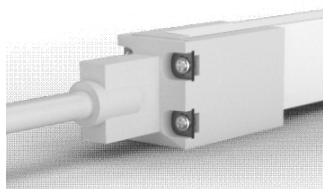
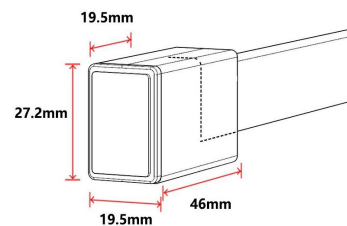
IP67 Sleeve Front Connector (Direct)
SFS11-SL-D

DIY type, can be installed on site
Cable Output: direct
Standard Cable Length: 0.5m/1m/2m/3m



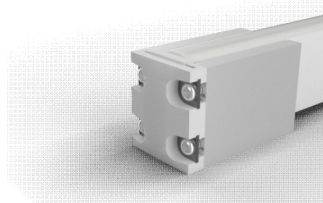
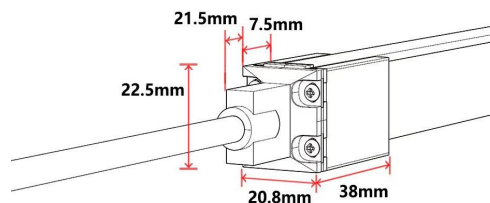
IP67 Sleeve End Cap
SFS11-SL-EC

DIY type, can be installed on site



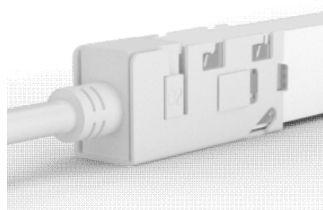
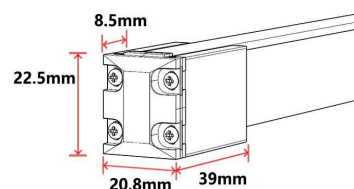
IP67 Screw Front Connector (Direct)
SFS11-SC-D

DIY type, can be installed on site
Cable Output: direct
Standard Cable Length: 0.5m/1m/2m/3m



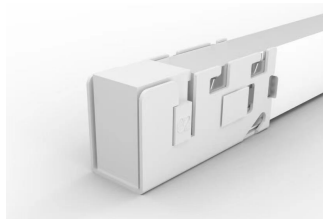
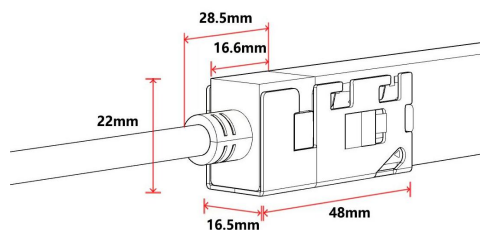
IP67 Screw End Cap
SFS11-SC-EC

DIY type, can be installed on site



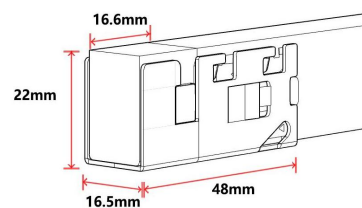
IP65 Clasp Front Connector (Direct)
SFS11-CL-D

DIY type, can be installed on site
Cable Output: direct
Standard Cable Length: 0.5m/1m/2m/3m

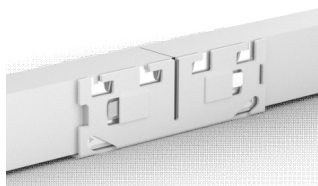


IP65 Clasp End Cap
SFS11-CL-EC

DIY type, can be installed on site

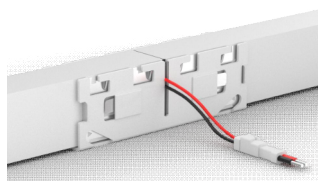
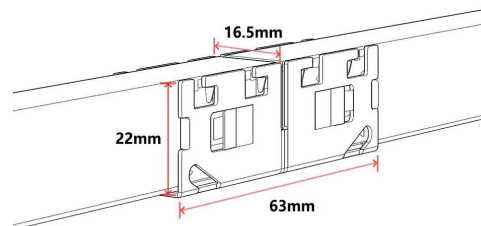


1. Connectors



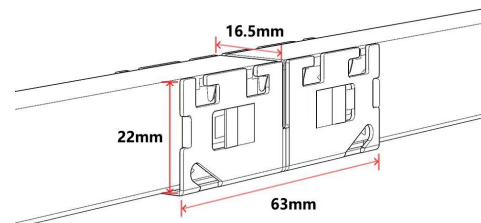
IP65 Seamless Middle Connector
SFS11-CL-MC

DIY type, can be installed on site
Cable Output: direct
Standard Cable Length: 0.2m~2m

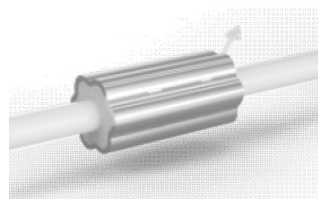


IP65 Seamless Power T-Feed
SFS11-CL-MTF

DIY type, can be installed on site
Cable Output: side
Standard Cable Length: 0.2m~2m

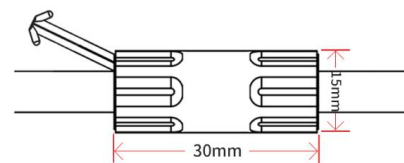


1.3 On Cable Waterproof Connector



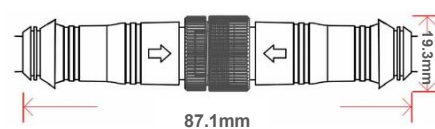
Waterproof Interrupter

The waterproof interrupter is installed on the cable at 120mm from the front connector, which protect against water ingress from inside of cable



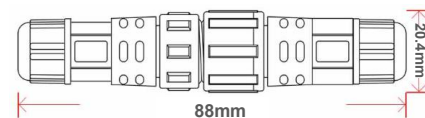
Male & Female Connector
CT01

DIY or Pre-installed, IP67
Stand Cable Length: 0.5m/1m/2m/3m
Cable Diameter: $\Phi 6.0\text{mm}$



Male & Female Connector
CT02

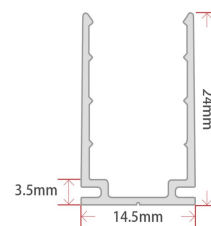
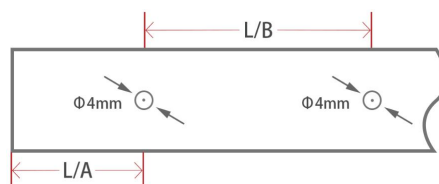
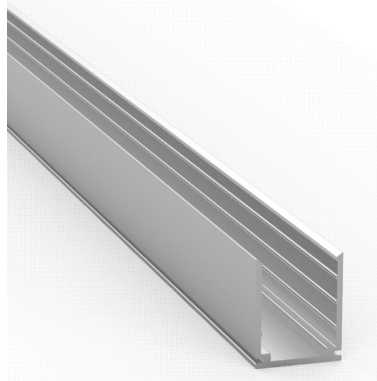
DIY or Pre-installed, IP68 /IP67 optional



Note: For all DIY connectors, installation on site will void warranty regarding waterproof.

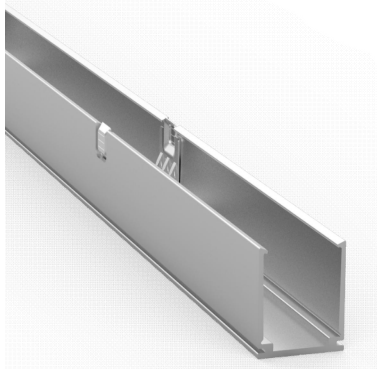
2. Mounting Profile

2.1 Standard Aluminum Profile ▼

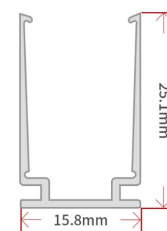
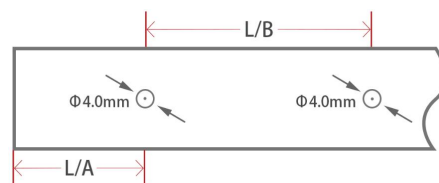


| W*H | Model | Standard Length | Hole Number | Screw Hole | L1(mm) | L2(mm) | For Product |
|-----------|-----------------|-----------------|-------------|------------|--------|--------|--------------|
| 14.5x24mm | ALC-N-SF11-50 | 50mm | 1 | Φ4.0mm | 25.5 | / | SF11 / SFS11 |
| | ALC-N-SF11-1000 | 1000mm | 2 | Φ4.0mm | 20 | 60 | SF11 / SFS11 |
| | ALC-N-SF11-2000 | 2000mm | 4 | Φ4.0mm | 25 | 50 | SF11 / SFS11 |

2.2 Self Locking Aluminum Profile ▼

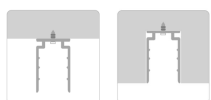


Max. Installation Angle

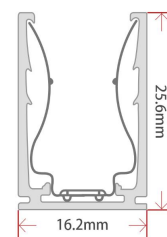
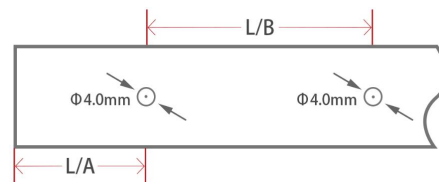


| W*H | Model | Standard Length | Hole Number | Screw Hole | L1(mm) | L2(mm) | For Product |
|-------------|------------------|-----------------|-------------|------------|--------|--------|--------------|
| 15.8x25.1mm | ALC-SL-SF11-50 | 50mm | 1 | Φ4.0mm | 25.5 | / | SF11 / SFS11 |
| | ALC-SL-SF11-1000 | 1000mm | 2 | Φ4.0mm | 20 | 60 | SF11 / SFS11 |
| | ALC-SL-SF11-2000 | 2000mm | 4 | Φ4.0mm | 25 | 50 | SF11 / SFS11 |

2.3 Bounce Locking Aluminum Profile ▼



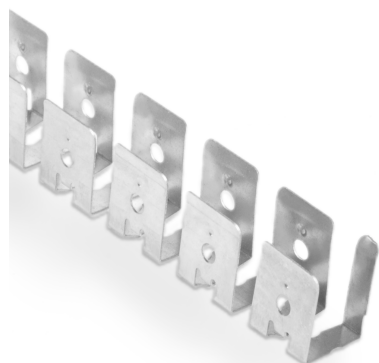
Max. Installation Angle



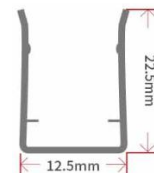
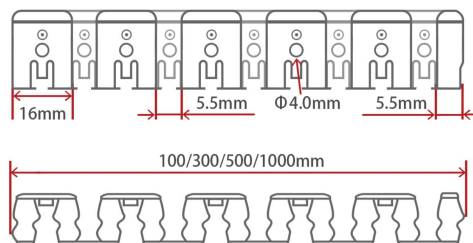
| W*H | Model | Standard Length | Hole Number | Screw Hole | L1(mm) | L2(mm) | For Product |
|-------------|------------------|-----------------|-------------|------------|--------|--------|--------------|
| 16.2x25.6mm | ALC-BL-SF11-50 | 50mm | 1 | Φ4.0mm | 25.5 | / | SF11 / SFS11 |
| | ALC-BL-SF11-1000 | 1000mm | 2 | Φ4.0mm | 20 | 60 | SF11 / SFS11 |
| | ALC-BL-SF11-2000 | 2000mm | 4 | Φ4.0mm | 25 | 50 | SF11 / SFS11 |

2. Mounting Profile

2.4 Bendable Stainless Steel Profile ▼

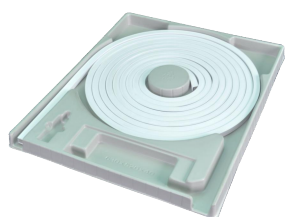


Max. Installation Angle



| W*H | Model | Standard Length | For Product |
|-------------|------------------|-----------------|--------------|
| 12.5x22.5mm | ALC-SL-SF11-100 | 100mm | SF11 / SFS11 |
| | ALC-SL-SF11-300 | 300mm | SF11 / SFS11 |
| | ALC-SL-SF11-500 | 500mm | SF11 / SFS11 |
| | ALC-SL-SF11-1000 | 1000mm | SF11 / SFS11 |

3. Packaging



Blister Plate



White Box



Carton



Carton



M Reel



L Reel



Carton



Carton

| Neon Length | Packing Method | White Box Dimension | Carton Dimension | White Box Numbers | Carton Weight |
|-------------|---------------------------------------|---------------------|------------------|-------------------|---------------|
| Max. 3.5m | S Blister Plate + White Box | 31x31x4.5cm | / | / | ≤1.4kg |
| Max. 7.5m | M Blister Plate + White Box + Carton | 40x50x4.5cm | 41x51x25cm | 5 | ≤15.5kg |
| Max. 15m | L Blister Plate + White Box + Carton | 54x64x4.5cm | 55x65x25cm | 5 | ≤29.4kg |
| Max. 25m | XL Blister Plate + White Box + Carton | 68x79x4.5cm | 69x80x15.5cm | 2 | ≤19.5kg |
| Max. 70m | L Reel + Carton | Φ45x25cm | 47x47x28cm | 1 | ≤24.3kg |