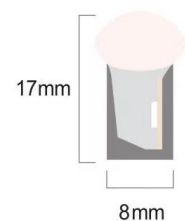


# Accessories for

## SFS17 Silicone

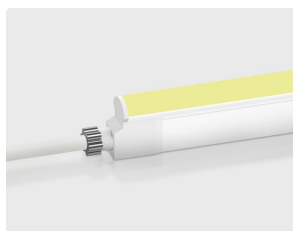
### Contents

<b>1. Connectors</b>	<b>02</b>
1.1 Injection-moulded Connector	
1.2 DIY Connector	
1.3 On Cable Waterproof connector	
<b>2. Mounting Profile</b>	<b>04</b>
2.1 Standard Aluminum Profile	
2.2 Bendable Stainless Steel Profile	
<b>3. Packaging</b>	<b>05</b>



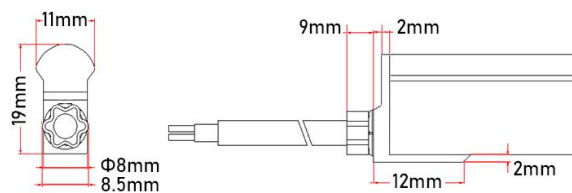
# 1. Connectors

## 1.1 IP67 Injection-moulded Connector



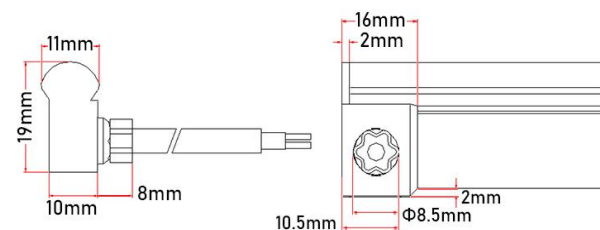
**Injection-moulded Front Connector (Direct)**  
SFS17-IM-D

Factory Pre-installed  
Cable Output: direct  
Standard Cable Length: 0.5m/1m/2m/3m



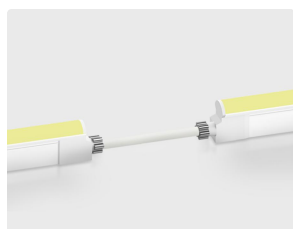
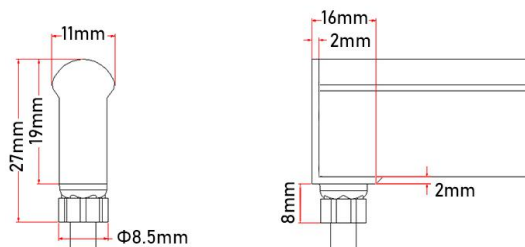
**Injection-moulded Front Connector (Side)**  
SFS17-IM-S

Factory Pre-installed  
Cable Output: side  
Standard Cable Length: 0.5m/1m/2m/3m



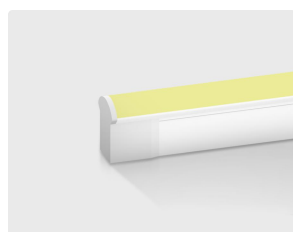
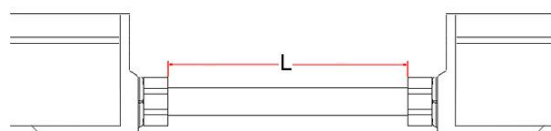
**Injection-moulded Front Connector (Bottom)**  
SFS17-IM-B

Factory Pre-installed  
Cable Output: bottom  
Standard Cable Length: 0.5m/1m/2m/3m



**Injection-moulded Middle Jumper**  
SFS17-IM-MJ

Factory Pre-installed  
Cable Output: direct  
Standard Cable Length: 0.2m~2m



**Injection-moulded End Cap**  
SFS17-IM-EC

Factory Pre-installed



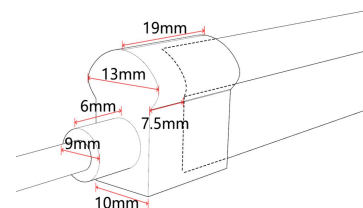
# 1. Connectors

## 1.2 IP67 DIY Moulded Connector



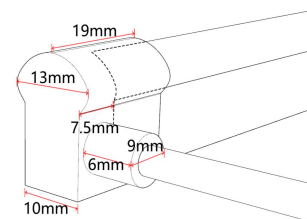
**DIY Moulded Connector IP67 (Direct)**  
SFS17-MD-D

DIY type, can be installed on site  
Cable Output: direct



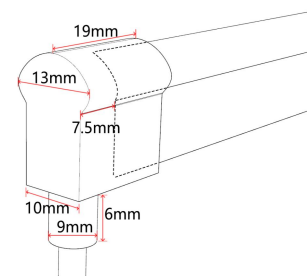
**DIY Moulded Connector IP67 (Side)**  
SFS17-MD-S

DIY type, can be installed on site  
Cable Output: side



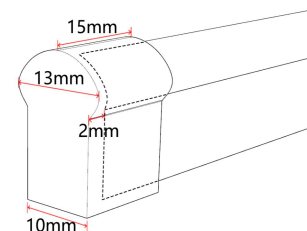
**DIY Moulded Connector IP67 (Bottom)**  
SFS17-MD-B

DIY type, can be installed on site  
Cable Output: bottom

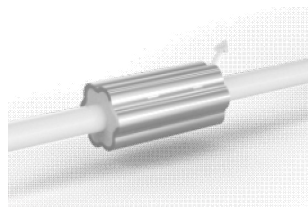


**DIY Moulded End Cap IP67**  
SFS17-MD-EC

DIY type, can be installed on site

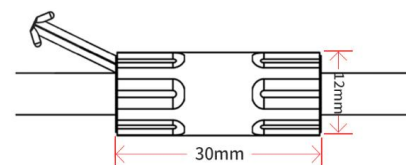


## 1.3 On Cable Waterproof Connector



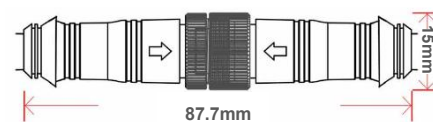
**Waterproof Interrupter**

The waterproof interrupter is installed on the cable at 120mm from the front connector, which protect against water ingress from inside of cable



**Male & Female Connector**  
CT01

DIY or Pre-installed, IP67  
Stand Cable Length: 0.5m/1m/2m/3m  
Cable Diameter:  $\Phi$ 6.0mm

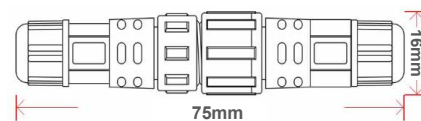


# 1. Connectors



**Male & Female Connector**  
CT02

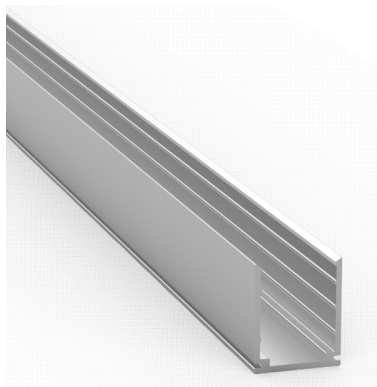
DIY or Pre-installed, IP68 /IP67 optional



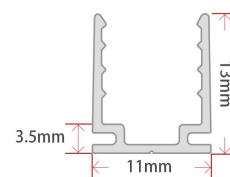
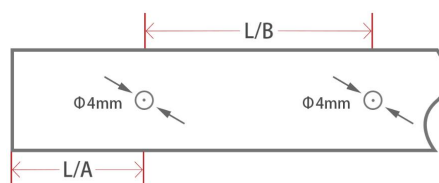
**Note:** For all DIY connectors, installation on site will void warranty regarding waterproof.

# 2. Mounting Profile

## 2.1 Standard Aluminum Profile ▼

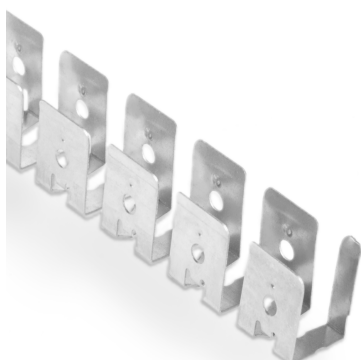


Max. Installation Angle

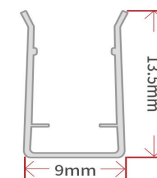
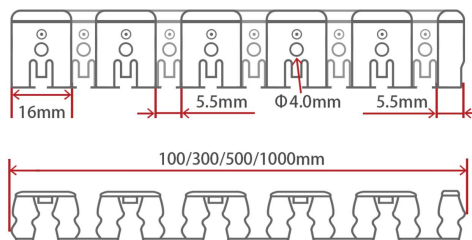


W*H	Model	Standard Length	Hole Number	Screw Hole	L1(mm)	L2(mm)	For Product
11x13mm	ALC-N-SFS17-50	50mm	1	Ø4.0mm	25.5	/	SFS17
	ALC-N-SFS17-1000	1000mm	2	Ø4.0mm	20	60	SFS17
	ALC-N-SFS17-2000	2000mm	4	Ø4.0mm	25	50	SFS17

## 2.2 Bendable Stainless Steel Profile ▼

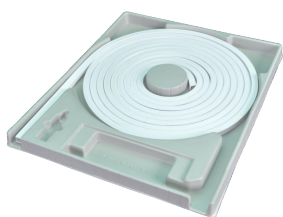


Max. Installation Angle



W*H	Model	Standard Length	For Product
9x13.5mm	ALC-SL-SFS17-100	100mm	SFS17
	ALC-SL-SFS17-300	300mm	SFS17
	ALC-SL-SFS17-500	500mm	SFS17
	ALC-SL-SFS17-1000	1000mm	SFS17

### 3. Packaging



Blister Plate



White Box



Carton



Carton



M Reel



L Reel



Carton



Carton

Neon Length	Packing Method	White Box Dimension	Carton Dimension	White Box Numbers	Carton Weight
Max. 8m	S Blister Plate + White Box	31x31x4.5cm	/	/	≤1.5kg
Max. 16m	M Blister Plate + White Box + Carton	40x50x4.5cm	41x51x25cm	5	≤16.2kg
Max. 30m	L Blister Plate + White Box + Carton	54x64x4.5cm	55x65x25cm	5	≤29.4kg
Max. 50m	XL Blister Plate + White Box + Carton	68x79x4.5cm	69x80x15.5cm	2	≤19.5kg
Max. 50m	M Reel + Carton	Φ31x16cm	35x35x35cm	2	≤18.6kg

END