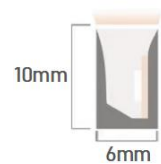
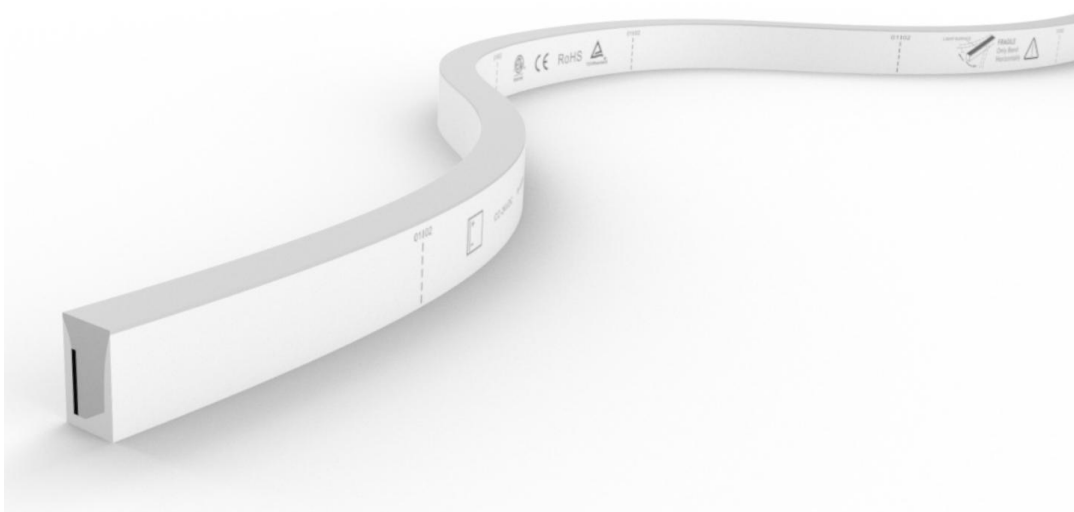


Accessories for

SFS06 Silicone

Contents

1. Connectors	02
1.1 DIY Connector	
1.2 On Cable Waterproof connector	
2. Mounting Profile	03
2.1 Standard Aluminum Profile	
2.2 Bendable Stainless Steel Profile	
3. Packaging	04



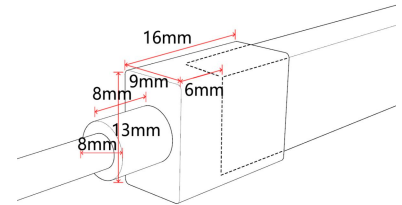
1. Connectors

1.1 DIY Moulded Connector IP67



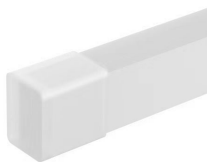
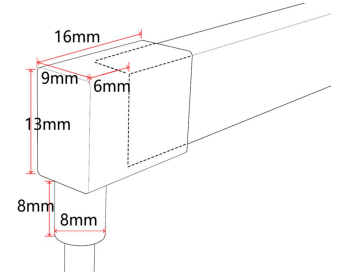
DIY Moulded Connector IP67 (Direct)
SFS06-MD-D

DIY type, can be installed on site
Cable Output: direct



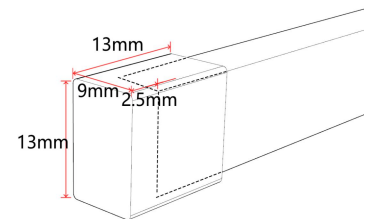
DIY Moulded Connector IP67 (Bottom)
SFS06-MD-B

DIY type, can be installed on site
Cable Output: bottom



DIY Moulded End Cap IP67
SFS06-MD-EC

DIY type, can be installed on site

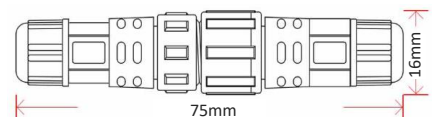


1.2 On Cable Waterproof Connector



Male & Female Connector
CT02

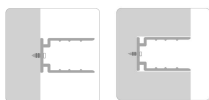
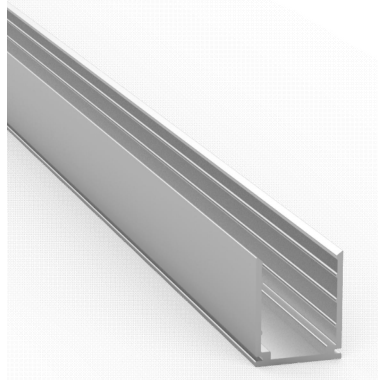
DIY or Pre-installed, IP67



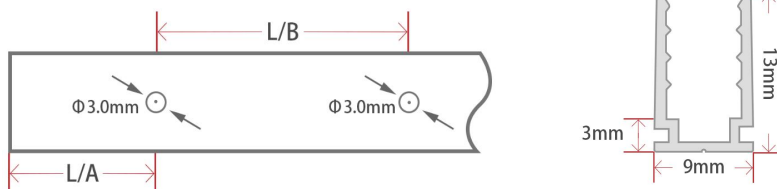
Note: For all DIY connectors, installation on site will void warranty regarding waterproof.

2. Mounting Profile

2.1 Standard Aluminum Profile ▼



Max. Installation Angle

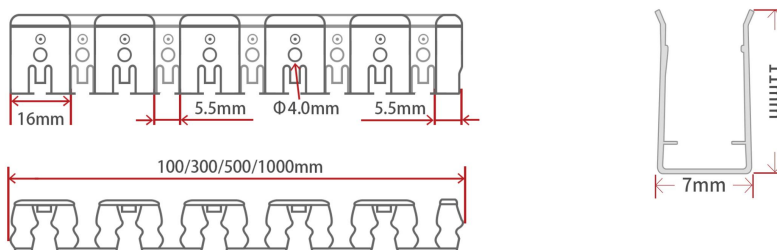


W*H	Model	Standard Length	Hole Number	Screw Hole	L1(mm)	L2(mm)	For Product
9x13mm	ALC-N-SFS06-50	50mm	1	Φ3.0mm	25.5	/	SFS06
	ALC-N-SFS06-1000	1000mm	2	Φ3.0mm	20	60	SFS06
	ALC-N-SFS06-2000	2000mm	4	Φ3.0mm	25	50	SFS06

2.2 Bendable Stainless Steel Profile ▼

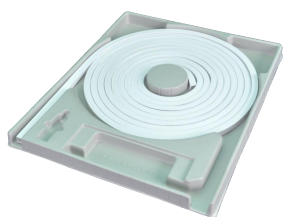


Max. Installation Angle



W*H	Model	Standard Length	For Product
7x11mm	ALC-SL-SFS06-100	100mm	SFS06
	ALC-SL-SFS06-300	300mm	SFS06
	ALC-SL-SFS06-500	500mm	SFS06
	ALC-SL-SFS06-1000	1000mm	SFS06

3. Packaging



Blister Plate



White Box



Carton



Carton



M Reel



L Reel



Carton



Carton

Neon Length	Packing Method	White Box Dimension	Carton Dimension	White Box Numbers	Carton Weight
Max. 12m	S Blister Plate + White Box	31x31x4.5cm	/	/	≤1.4kg
Max. 30m	M Blister Plate + White Box + Carton	40x50x4.5cm	41x51x25cm	5	≤17.2kg
Max. 50m	L Blister Plate + White Box + Carton	54x64x4.5cm	55x65x25cm	5	≤28.4kg
Max. 80m	XL Blister Plate + White Box + Carton	68x79x4.5cm	69x80x15.5cm	2	≤20.5kg
Max. 150m	M Reel + Carton	Φ31x16cm	35x35x35cm	2	≤29.2kg

END