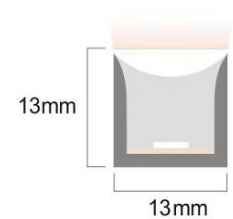


Accessories for

SFS13-VB Silicone

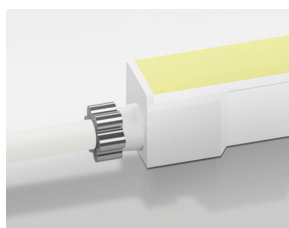
Contents

1. Connectors	02
1.1 Injection-moulded Connector	
1.2 DIY Connector	
1.3 On Cable Waterproof connector	
2. Mounting Profile	04
2.1 Standard Aluminum Profile	
2.2 Bendable Stainless Steel Profile	
3. Packaging	05



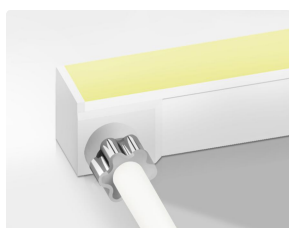
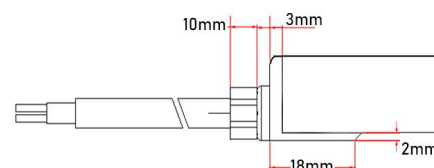
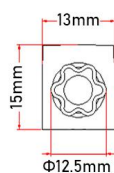
1. Connectors

1.1 IP67 Injection-moulded Connector



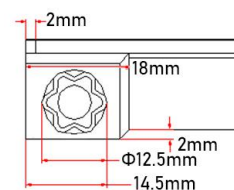
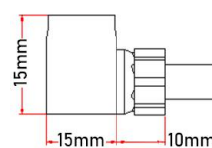
Injection-moulded Front Connector (Direct)
SFS13-VB-IM-D

Factory Pre-installed
Cable Output: direct
Standard Cable Length: 0.5m/1m/2m/3m



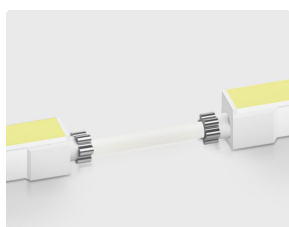
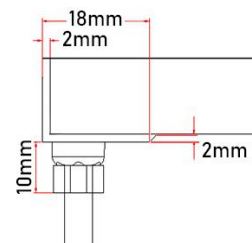
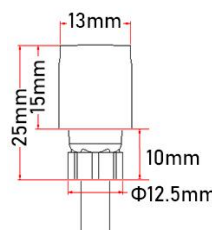
Injection-moulded Front Connector (Side)
SFS13-VB-IM-S

Factory Pre-installed
Cable Output: side
Standard Cable Length: 0.5m/1m/2m/3m



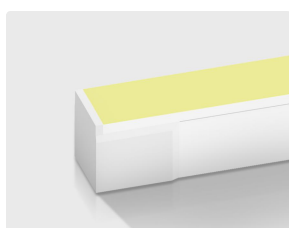
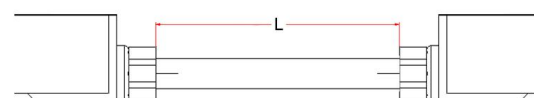
Injection-moulded Front Connector (Bottom)
SFS13-VB-IM-B

Factory Pre-installed
Cable Output: bottom
Standard Cable Length: 0.5m/1m/2m/3m



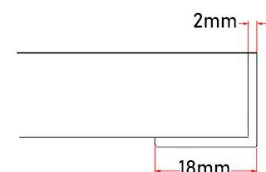
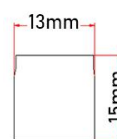
Injection-moulded Middle Jumper
SFS13-VB-IM-MJ

Factory Pre-installed
Cable Output: direct
Standard Cable Length: 0.2m~2m



Injection-moulded End Cap
SFS13-VB-IM-EC

Factory Pre-installed



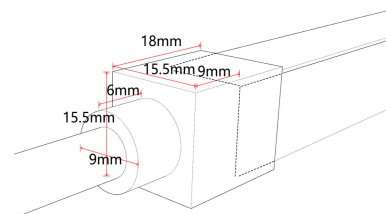
1. Connectors

1.2 IP67 DIY Moulded Connector



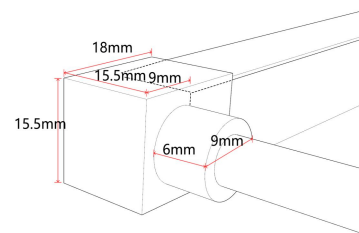
DIY Moulded Connector IP67 (Direct)
SFS13-VB-MD-D

DIY type, can be installed on site
Cable Output: direct



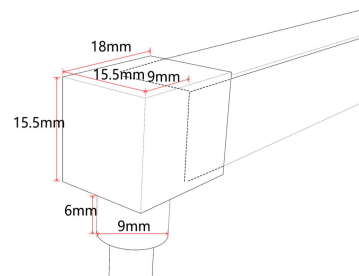
DIY Moulded Connector IP67 (Side)
SFS13-VB-MD-S

DIY type, can be installed on site
Cable Output: direct



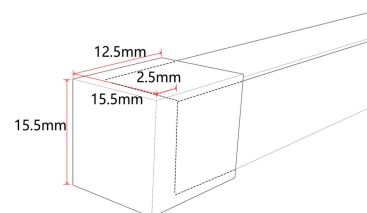
DIY Moulded Connector IP67 (Bottom)
SFS13-VB-MD-B

DIY type, can be installed on site
Cable Output: direct

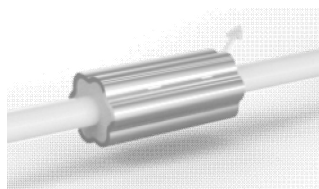


DIY Moulded End Cap IP67
SFS13-VB-MD-EC

DIY type, can be installed on site

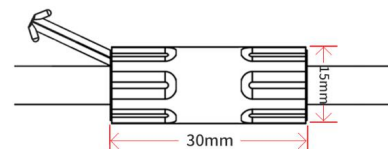


1.3 On Cable Waterproof Connector



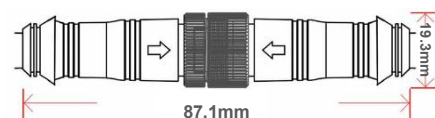
Waterproof Interrupter

The waterproof interrupter is installed on the cable at 120mm from the front connector, which protect against water ingress from inside of cable



Male & Female Connector
CT01

DIY or Pre-installed, IP67
Stand Cable Length: 0.5m/1m/2m/3m
Cable Diameter: Φ 6.0mm

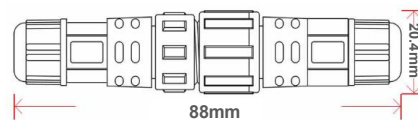


1. Connectors



Male & Female Connector
CT02

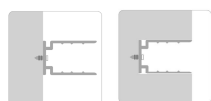
DIY or Pre-installed, IP68 /IP67 optional



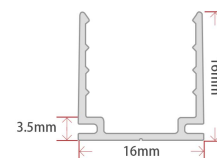
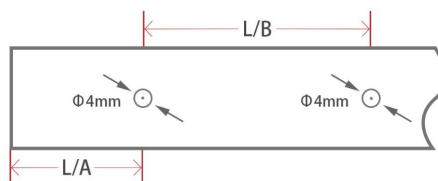
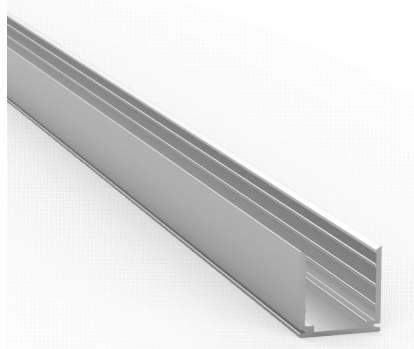
Note: For all DIY connectors, installation on site will void warranty regarding waterproof.

2. Mounting Profile

2.1 Standard Aluminum Profile ▼



Max. Installation Angle

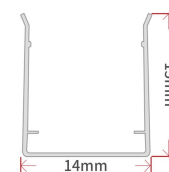
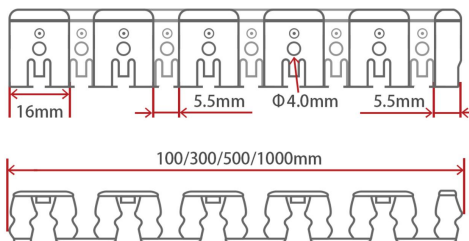
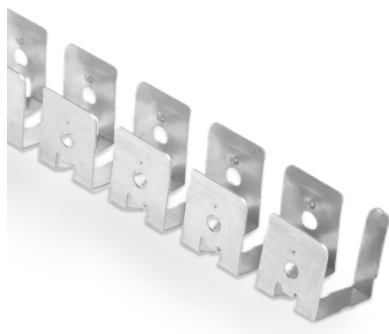


W*H	Model	Standard Length	Hole Number	Screw Hole	L1(mm)	L2(mm)	For Product
16x16mm	ALC-N-SFS13-50	50mm	1	Ø4.0mm	25.5	/	SFS13-VB / SFS13-HB
	ALC-N-SFS13-1000	1000mm	2	Ø4.0mm	20	60	SFS13-VB / SFS13-HB
	ALC-N-SFS13-2000	2000mm	4	Ø4.0mm	25	50	SFS13-VB / SFS13-HB

2.2 Bendable Stainless Steel Profile ▼

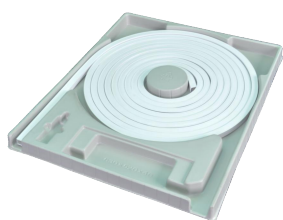


Max. Installation Angle



W*H	Model	Standard Length	For Product
14x15mm	ALC-SL-SFS13-100	100mm	SFS13-VB / SFS13-HB
	ALC-SL-SFS13-300	300mm	SFS13-VB / SFS13-HB
	ALC-SL-SFS13-500	500mm	SFS13-VB / SFS13-HB
	ALC-SL-SFS13-1000	1000mm	SFS13-VB / SFS13-HB

3. Packaging



Blister Plate



White Box



Carton



Carton



M Reel



L Reel



Carton



Carton

Neon Length	Packing Method	White Box Dimension	Carton Dimension	White Box Numbers	Carton Weight
Max. 4m	S Blister Plate + White Box	31x31x4.5cm	/	/	≤0.9kg
Max. 10m	M Blister Plate + White Box + Carton	40x50x4.5cm	41x51x25cm	5	≤11.7kg
Max. 20m	L Blister Plate + White Box + Carton	54x64x4.5cm	55x65x25cm	5	≤21.9kg
Max. 40m	XL Blister Plate + White Box + Carton	68x79x4.5cm	69x80x15.5cm	2	≤18.9kg
Max. 80m	L Reel + Carton	Φ45x25cm	47x47x28cm	1	≤15.3kg

END