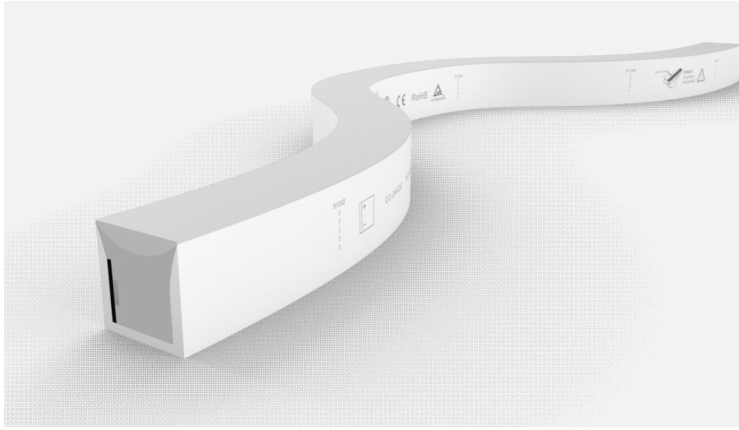
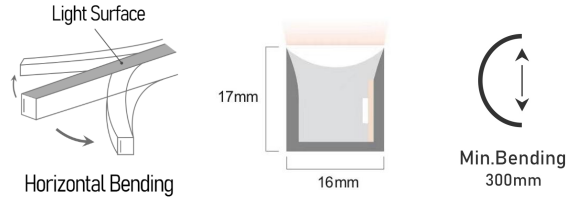


# Specification



## SFS16-HB-S-DMX Pixel Chasing RGBW (Silicon)



## Technical Parameters

Electrical	Input Voltage	24V CC
	Power Consumption	22W/m
	IC Type	DMX512
	IC Chip Model.	UCS512B4
Optical	LED Type & Chip Brand	SMD 5050, Epistar
	LED Color	RGBW
Physical	LED Qty	84 LEDs/m
	Min. Cutting Length	83.3mm
	Min. Bending Diameter	Φ300mm
Temperature	Operation Temperature	-40°C~55°C
	Max. Mounting Surface Temp.	85°C
Durability	Warranty	5 Years Warranty
	Max. IP Rating	IP67
	Lumen Maintenance	70,000 Hours L70 @ 25°C, 50,000 Hours L70 @ 50°C

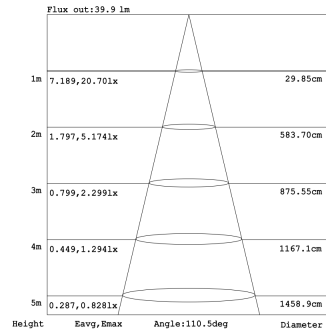
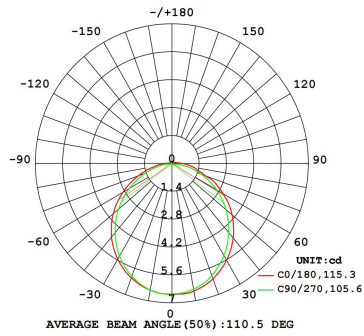
## Models List

Model No.	LED Color	Power/m	Lumen/m	Pixel /m	Min. Cutting Length	Max. Run Length /Single End
SFS16-HB-S-DMX-CC24-RGBW(27K)-84-22W	RGBW(2700K)	22W/m	455lm±5%	12 Pixels	83.3mm	5m
SFS16-HB-S-DMX-CC24-RGBW(30K)-84-22W	RGBW(3000K)	22W/m	455lm±5%	12 Pixels	83.3mm	5m
SFS16-HB-S-DMX-CC24-RGBW(40K)-84-22W	RGBW(4000K)	22W/m	455lm±5%	12 Pixels	83.3mm	5m

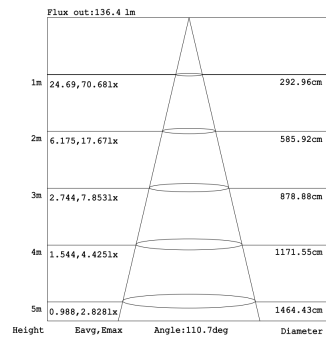
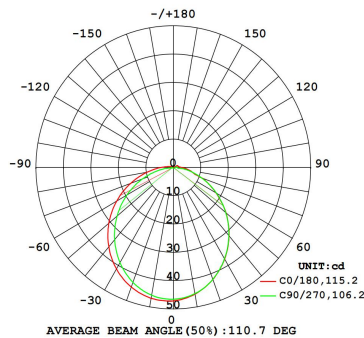
# Specification

## Illuminance Distribution

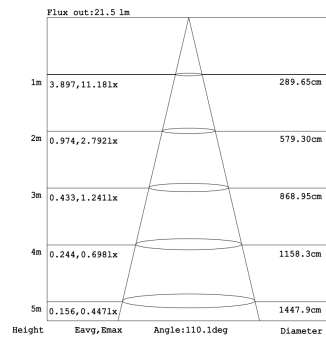
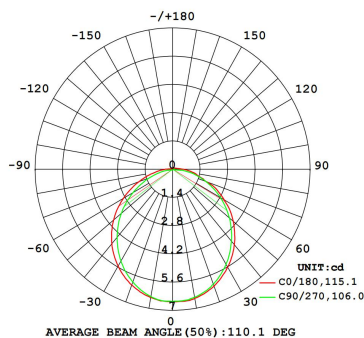
Red



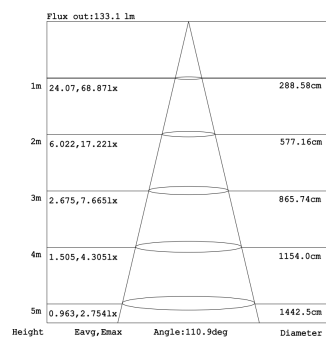
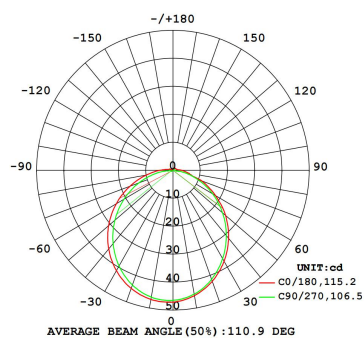
Green



Blue



3000K



RGBW

