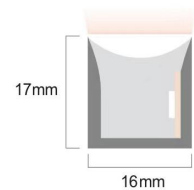
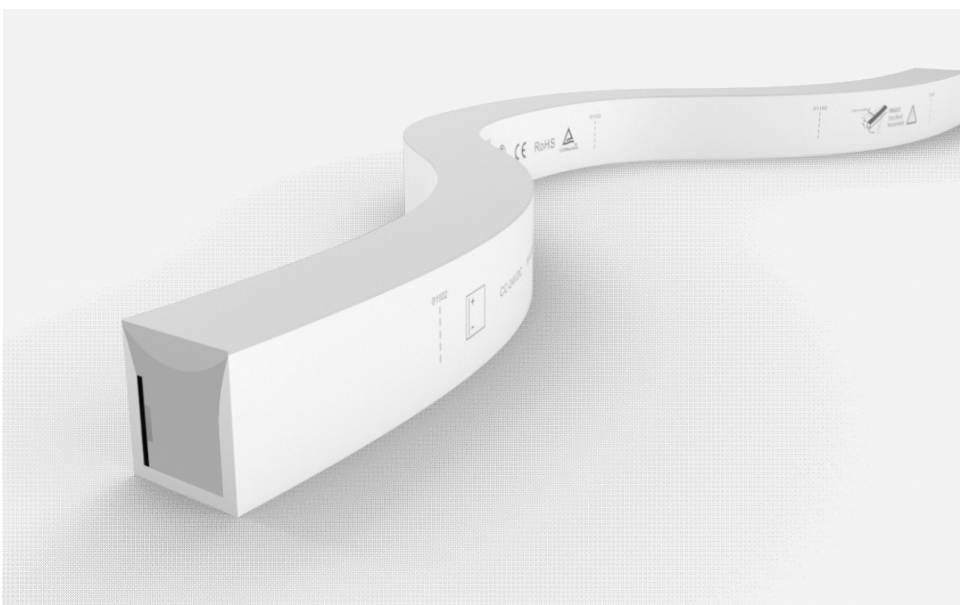


Accessories for

SFS16-HB Silicone

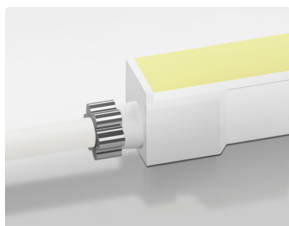
Contents

1. Connectors	02
1.1 Injection-moulded Connector	
1.2 DIY Connector	
1.3 On Cable Waterproof connector	
2. Mounting Profile	05
2.1 Standard Aluminum Profile	
2.2 Self Locking Aluminum Profile	
2.3 Bounce Locking Aluminum Profile	
2.4 Bendable Stainless Steel Profile	
3. Packaging	06



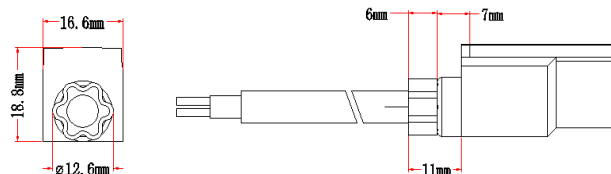
1. Connectors

1.1 IP67 Injection-moulded Connector



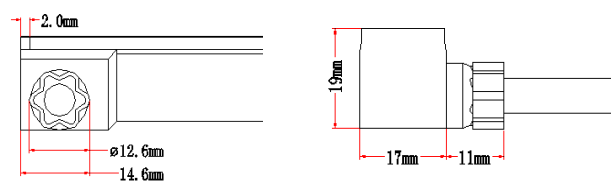
Injection-moulded Front Connector (Direct)
SFS16-HB-IM-D

Factory Pre-installed
Cable Output: direct
Standard Cable Length: 0.5m/1m/2m/3m



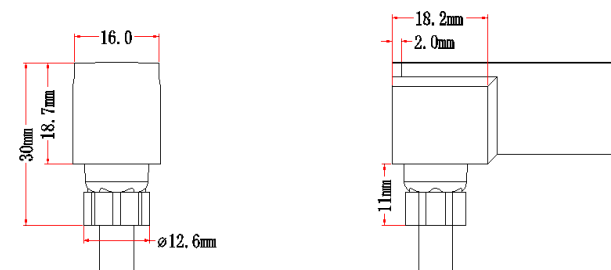
Injection-moulded Front Connector (Side)
SFS16-HB-IM-S

Factory Pre-installed
Cable Output: side
Standard Cable Length: 0.5m/1m/2m/3m



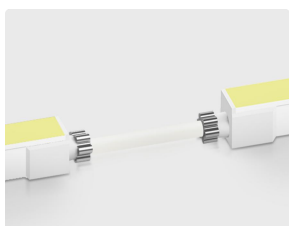
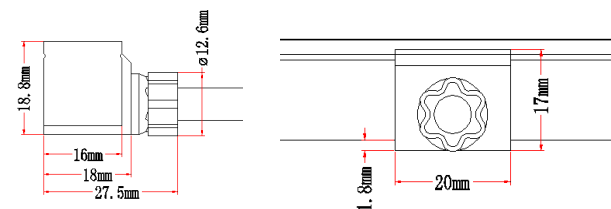
Injection-moulded Front Connector (Bottom)
SFS16-HB-IM-B

Factory Pre-installed
Cable Output: bottom
Standard Cable Length: 0.5m/1m/2m/3m



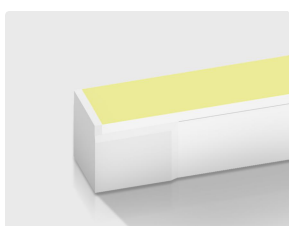
Injection-moulded Middle Connector
SFS16-HB-IM-MC

Factory Pre-installed
Cable Output: side
Standard Cable Length: 0.5m/1m/2m/3m



Injection-moulded Middle Jumper
SFS16-HB-IM-MJ

Factory Pre-installed
Cable Output: direct
Standard Cable Length: 0.2m~2m



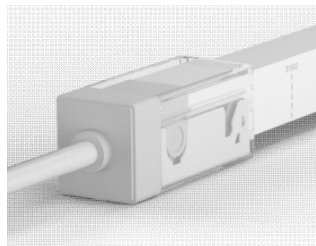
Injection-moulded End Cap
SFS16-HB-IM-EC

Factory Pre-installed



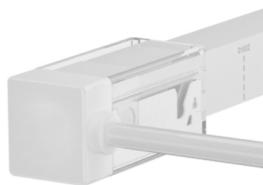
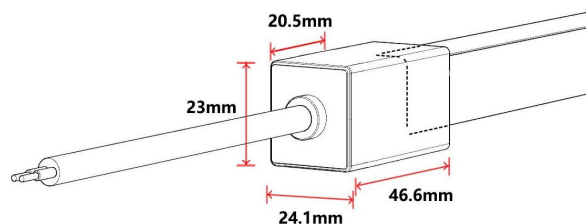
1. Connectors

1.2 DIY Connector



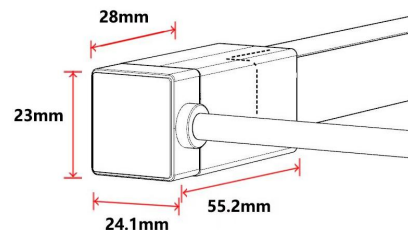
IP67 Sleeve Front Connector (Direct)
SFS16-HB-SL-D

DIY type, can be installed on site
Cable Output: direct
Standard Cable Length: 0.5m/1m/2m/3m



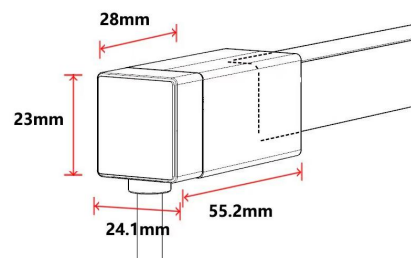
IP67 Sleeve Front Connector (Side)
SFS16-HB-SL-S

DIY type, can be installed on site
Cable Output: side
Standard Cable Length: 0.5m/1m/2m/3m



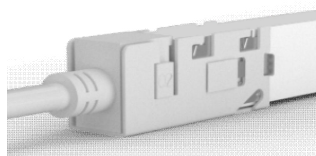
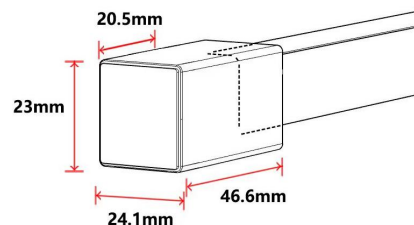
IP67 Sleeve Front Connector (Bottom)
SFS16-HB-SL-B

DIY type, can be installed on site
Cable Output: bottom
Standard Cable Length: 0.5m/1m/2m/3m



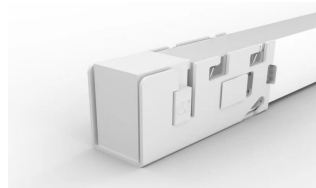
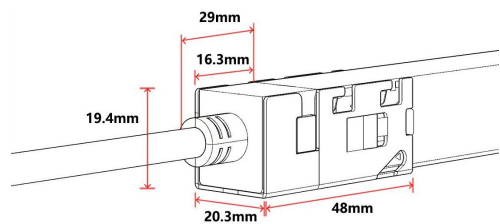
IP67 Sleeve End Cap
SFS16-HB-SL-EC

DIY type, can be installed on site



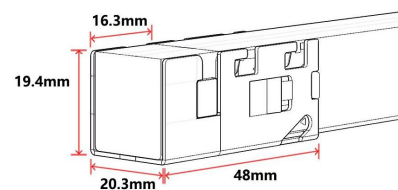
IP65 Clasp Front Connector (Direct)
SFS16-HB-CL-D

DIY type, can be installed on site
Cable Output: direct
Standard Cable Length: 0.5m/1m/2m/3m

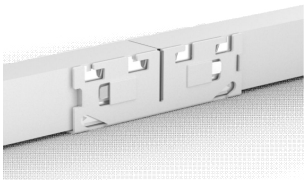


IP65 Clasp End Cap
SFS16-HB-CL-EC

DIY type, can be installed on site

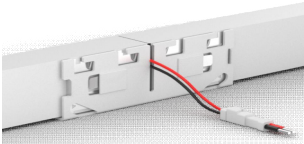
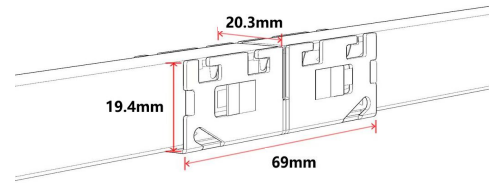


1. Connectors



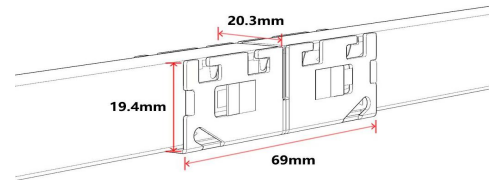
IP65 Seamless Middle Connector
SF16-VB-CL-MC

DIY type, can be installed on site
Cable Output: direct
Standard Cable Length: 0.2m~2m

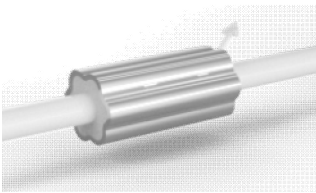


IP65 Seamless Power T-Feed
SF16-VB-CL-MTF

DIY type, can be installed on site
Cable Output: side
Standard Cable Length: 0.2m~2m

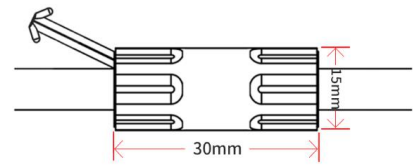


1.3 On Cable Waterproof Connector



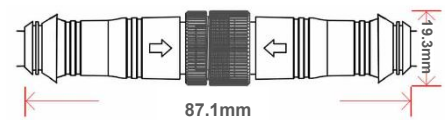
Waterproof Interrupter

The waterproof interrupter is installed on the cable at 120mm from the front connector, which protect against water ingress from inside of cable



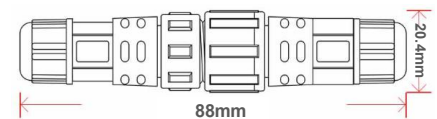
Male & Female Connector
CT01

DIY or Pre-installed, IP67
Stand Cable Length: 0.5m/1m/2m/3m
Cable Diameter: $\Phi 6.0\text{mm}$



Male & Female Connector
CT02

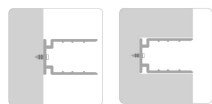
DIY or Pre-installed, IP68 /IP67 optional



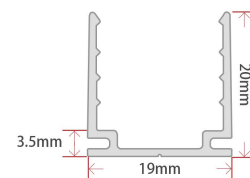
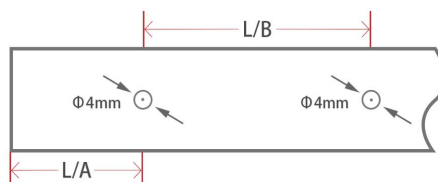
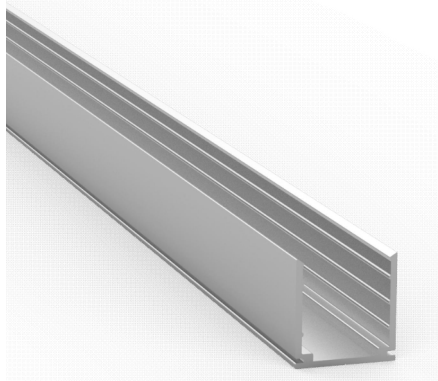
Note: For all DIY connectors, installation on site will void warranty regarding waterproof.

2. Mounting Profile

2.1 Standard Aluminum Profile ▼

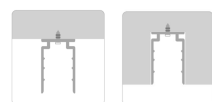


Max. Installation Angle

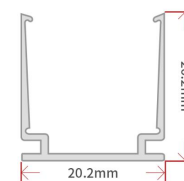
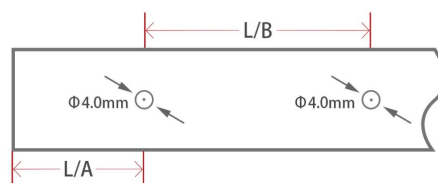
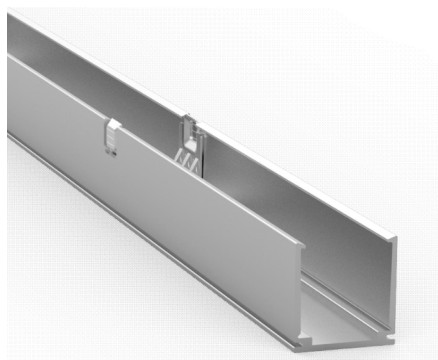


W*H	Model	Standard Length	Hole Number	Screw Hole	L1(mm)	L2(mm)	For Product
19x20mm	ALC-N-SF16-50	50mm	1	Ø4.0mm	25.5	/	SF16 / SFS16
	ALC-N-SF16-1000	1000mm	2	Ø4.0mm	20	60	SF16 / SFS16
	ALC-N-SF16-2000	2000mm	4	Ø4.0mm	25	50	SF16 / SFS16

2.2 Self Locking Aluminum Profile ▼



Max. Installation Angle

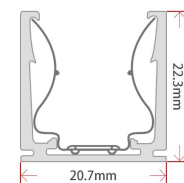
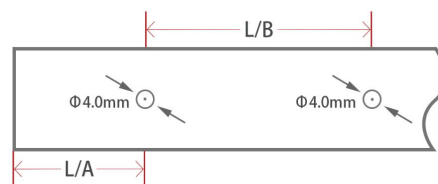


W*H	Model	Standard Length	Hole Number	Screw Hole	L1(mm)	L2(mm)	For Product
20.2x20.2mm	ALC-SL-SF16-50	50mm	1	Ø4.0mm	25.5	/	SF16 / SFS16
	ALC-SL-SF16-1000	1000mm	2	Ø4.0mm	20	60	SF16 / SFS16
	ALC-SL-SF16-2000	2000mm	4	Ø4.0mm	25	50	SF16 / SFS16

2.3 Bounce Locking Aluminum Profile ▼



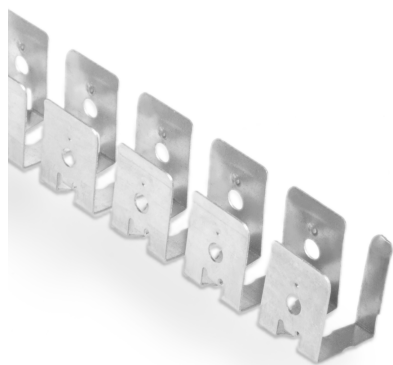
Max. Installation Angle



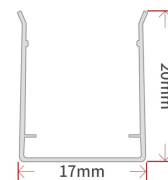
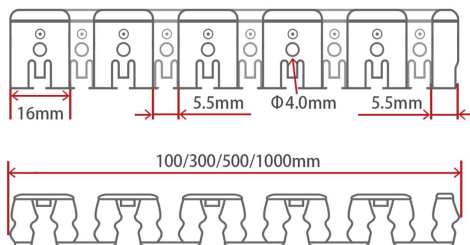
W*H	Model	Standard Length	Hole Number	Screw Hole	L1(mm)	L2(mm)	For Product
20.7x22.3mm	ALC-BL-SF16-50	50mm	1	Ø4.0mm	25.5	/	SF16 / SFS16
	ALC-BL-SF16-1000	1000mm	2	Ø4.0mm	20	60	SF16 / SFS16
	ALC-BL-SF16-2000	2000mm	4	Ø4.0mm	25	50	SF16 / SFS16

2. Mounting Profile

2.4 Bendable Stainless Steel Profile ▼

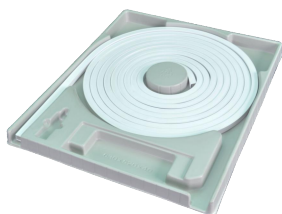


Max. Installation Angle



W*H	Model	Standard Length	For Product
17x20mm	ALC-SL-SF16-100	100mm	SF16 / SFS16
	ALC-SL-SF16-300	300mm	SF16 / SFS16
	ALC-SL-SF16-500	500mm	SF16 / SFS16
	ALC-SL-SF16-1000	1000mm	SF16 / SFS16

3. Packaging



Blister Plate



White Box



Carton



Carton



M Reel



L Reel



Carton



Carton

Neon Length	Packing Method	White Box Dimension	Carton Dimension	White Box Numbers	Carton Weight
Max. 1m	S Blister Plate + White Box	31x31x4.5cm	/	/	≤0.7kg
Max. 4m	M Blister Plate + White Box + Carton	40x50x4.5cm	41x51x25cm	5	≤11.4kg
Max. 8m	L Blister Plate + White Box + Carton	54x64x4.5cm	55x65x25cm	5	≤21.3kg
Max. 15m	XL Blister Plate + White Box + Carton	68x79x4.5cm	69x80x15.5cm	2	≤16.3kg
Max. 50m	L Reel + Carton	Φ45x25cm	47x47x28cm	1	≤21.3kg